

## PRESS RELEASE 15

about a state-of-the-art Logistics Center

Proposal for headlines:

**State-of-the-art Logistics.**

**Conveyor systems in Logistics, exceptional clean and sleek.**

**Modern Logistic Center, built “as if from a single cast.”**

---

**Avancon SA in Switzerland has built together with its License Partner and System Integrator Hyundai LS/Asetec in South Korea a modern and exceptional example of a typical Logistics and Distribution Center.**

The final customer is the largest wholesale pharmaceutical and medical device distributor in South Korea, the Company Geo Young. They serve more than 250 multi-national and domestic pharmaceutical and medical device companies, distributing to more than 11,000 pharmacies, hospitals, and clinics through its nationwide logistics network 2 times a day.

This logistics and distribution center shows how you can use Avancon ZPC (Zone Powered Conveyor) and Avancon OTUs (Omni-directional Transfer Units) for conveying, inclines and declines, corners, turns, switches, transfers, for use in picking systems, for long accumulation distances and for sorters in the shipping area. A total of 1200 m Avancon conveyors and 110 OUT-tables are in use in different areas and for different applications. The speeds are between 0.5 m/s and 1.2 m/s.



Pay special attention to the clean and streamlined conveyor lines where nothing is sticking out, no switch box, no power box, no cables. They are as classic as sleek.

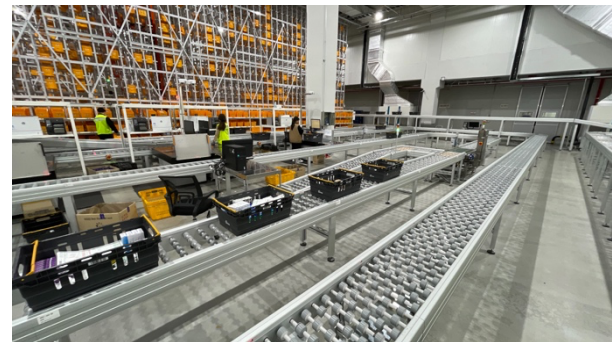
Everything looks “as if from one cast” and give the impression of an integrated whole by following the uniform Avancon design. You find more details of all Avancon modules and components at <https://www.avancon.com>



The Avancon ZPC Conveyor Concept is always equipped with zero pressure accumulation. This saves a lot of energy, because only those motors are running, where in this moment a box has to be transported, all other zones are standing still and don't use Energy.

In this Logistics Center are 2 different totes in use, a "storage tote" (orange) for the stored items and an "order tote" (black) that were shipped to the customers plus cardboard boxes in different sizes.

Besides the Avancon conveyors the system integrator Hyundai LS/Asetec delivered all other systems, like the storages, including the shuttle storage and all the software and the pick-to-light systems.



Everything was manufactured in South Korea. Of course, Avancon SA in Switzerland and our managing director of Avancon Asia Ltd. in Seoul offered every support and suggestion to make sure that all worked the way the customer expected.

See also the video: <https://www.avancon.com/case-history.html>

---

## For the editor:

- For this **Press Release** you may download good printable pictures in 300 dpi as .jpg-format or for the internet in 72

dpi as .jpg-format from our website:

<http://www.avancon.com/press.html> > PR 15

- For further questions, please contact:  
Dr Daniele Gambetta, Avancon SA, via Campagna 27,  
CH 6595 Riazzino/Switzerland  
Phone: +41 (0)91 222 1010  
E-Mail: [relations@avancon.com](mailto:relations@avancon.com)

Or call direct

Dieter Specht, Avancon SA, via Campagna 27,  
CH 6595 Riazzino/Switzerland  
Mobile: +41 (0)79 620 37 93  
E-Mail: [d.specht@avancon.com](mailto:d.specht@avancon.com)

- Please print also the images, because **a picture says more than 1000 words**. Pictures are the most important content in today's century, were all social media sites present more and more images.
- For more information, details, and further images you may have a look at our website: <http://www.avancon.com>
- Without titles, footnotes and abstract this report has 364 words and 2322 characters (including spaces).